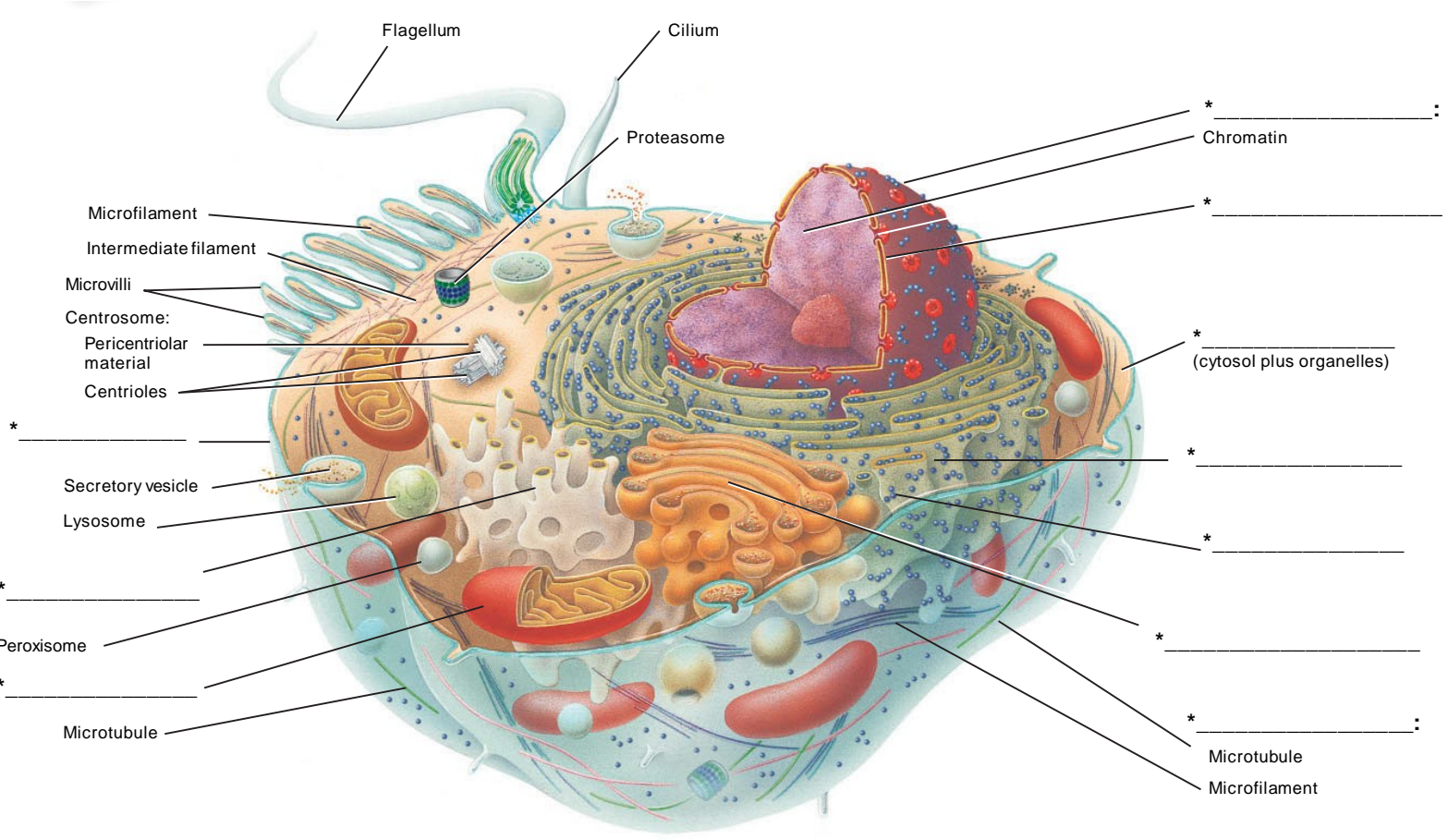


Name and date (3 pts):

**Cellular Contents Quiz:** Supply the 10 missing terms to the following definitions below, and then write-in the 10 missing cell components in the model cell at bottom.

- \_\_\_\_\_ : The “international border”. Separates cellular contents from the tissues and fluids outside the cell.
- \_\_\_\_\_ : The “head office”. Contains the genetic material, or DNA, which encodes for proteins.
- \_\_\_\_\_ : The “head office security”. Protects the genetic material (and processes) from the contents of the cell.
- \_\_\_\_\_ : The “environment”. The gel-like contents of the cell, containing the organelles and fluid.
- \_\_\_\_\_ : The “power plant of the cell”. Produces most of the cell’s energy in the form of ATP.
- \_\_\_\_\_ : The “protein factory”. Produces / assembles proteins which are specified by the DNA.
- \_\_\_\_\_ : The “lipid factory”. Produces / assembles lipids and steroids, and detoxifies poisons and drugs which enter the body.
- \_\_\_\_\_ : The “protein assembly machine”. The 2-part machine where amino acids are assembled into proteins from the information contained on the mRNA.
- \_\_\_\_\_ : The “post office or UPS”. Modifies and packages proteins and sends them where needed.
- \_\_\_\_\_ : The “highway system” and “beams” of the cell factory. Provides strength and form to the cell, and provides cable “roads” for transporting components around the cell.

## Prototypical animal (human) cell



Sectional view